

The Ryan Company, Inc.

A  QUANTA SERVICES COMPANY

Atwell Island Project

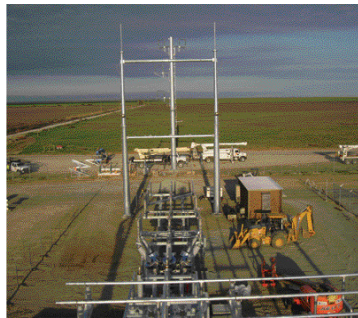
The Ryan Company, Inc., subsidiary of Quanta Services, Inc. (NYSE: PWR), provided comprehensive engineering, procurement and construction (EPC) services for the Atwell Island Solar Generation Facility Project. The project is a 20 megawatt utility-scale solar installation for SPS Atwell LLC, a project company partly owned by Samsung C&T America, Inc. Located near the city of Aplaugh in Tulare County, California. The project was developed by Samsung C&T America and has proven to be a significant contributor to the local community through the creation of local jobs and the generation of clean, renewable power.

Construction on the 160-acre site began in January 2012. It utilizes Sharp thin-film frame-less modules, Sharp racking systems and SMA inverters. The project connects to Pacific Gas & Electric's distribution system and provides approximately 42,200 MWh of power into the grid annually.

Ryan's responsibilities comprised of full engineering, procurement and construction of the entire system including procurement of the electrical equipment and preparation of the site, Ryan also managed project grading and trenching. In addition Ryan installed the support structures, modules racking system, modules, inverters, DC wiring, power cables with the associated collection equipment and all the electrical systems for the entire project involving module connections and inverter installation. The Ryan team designed and optimized the project processes, installation and the 21-115 kV substation interconnect.

KEY POINTS

- 20 MW_{AC} fixed-tilt project
- Sharp 130-watt and 125-watt thin-film frameless modules
- SMA 1.26 MW inverters
- Fixed ground-mount support structure on impact-driven steel piers
- Project completed July 2012
- Other Quanta subsidiaries-Dashiell Corporation



Contact Us
303-459-8300
ryancompany.net

Proprietary and Confidential