



The Ryan Company, Inc.

A  QUANTA SERVICES COMPANY

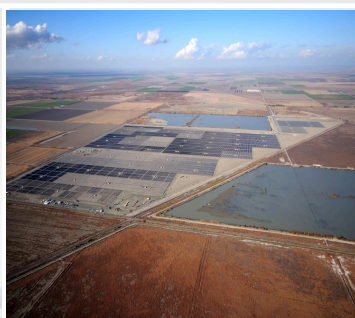
Alpaugh 50 & Alpaugh North

These two projects, covering more than 650 acres, were acquired by Consolidated Edison Development. Upon completion the two sites together are now producing enough power to serve roughly 58,000 homes in Tulare County, California. All the power generated by this facility is being sold to PG&E under a 25 year power purchasing agreement.

Ryan's responsibilities comprised full engineering, procurement and construction of the entire system including procurement of electrical equipment, preparation of the site involving management of all project grading and trenching. Ryan also installed the support structures, module racking system, modules, inverters, DC wiring, AC power cables, with the associated collection equipment and all electrical systems for the entire project involving module connections and inverter installation. The Ryan team designed and optimized the project processes, installation and the 34.5kV-11.5kV substation.

KEY POINTS

- Alpaugh 50- 50 MW_{AC} and Alpaugh North- 20 MW_{AC} single-axis tracking projects
- Trina 280,285, and 290-watt and Canadian Solar 280 and 285-watt modules
- Emerson 1.25 MW intertars
- Ground-mount single-axis tracker support structure on impact-driven steel piers
- Project completed January 2013
- Other Quanta Subsidiaries – Quanta Power Generation, Dashiell Corporation, Manual Brothers, PAR Electrical Contractors



Contact Us
303-459-8300
ryancompany.net